



St Hughes Lodge 68 Armley Lodge Road Leeds



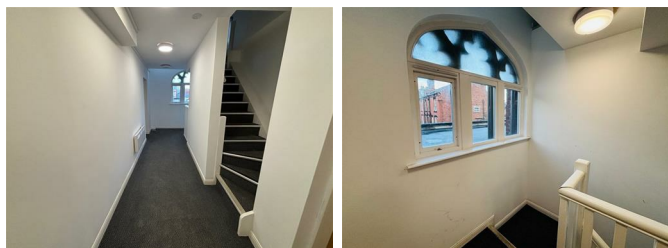
2 Bedroom Apartment £79,995

69 Lower Wortley Road
Wortley
Leeds
West Yorkshire
LS12 4SL
Tel: 0113 231 1033
Fax: 0113 203 8333

Web Site
www.kathwells.com

email
sales@kathwells.com

**Flat 7, St Hughes Lodge 68 Armley
Lodge Road, Armley, Leeds, West
Yorkshire, LS12 2AT**
Communal Entrance:



Stairs rising to the upper floors, intercom access

Entrance Hallway:

Access to accommodation

**Open Plan Living Room / Dining Area / Fitted
Kitch**



A open plan living area, dining area, fitted kitchen, double glazed window, a range of fitted draw & base units, work surfaces, gas hob burner with extractor above, built under oven / grill, inset sink & drainer, space for a fridge freezer, plumbing for an automatic washer, ample space for living room furniture, space for a dining table & chairs, television point

Bedroom One:

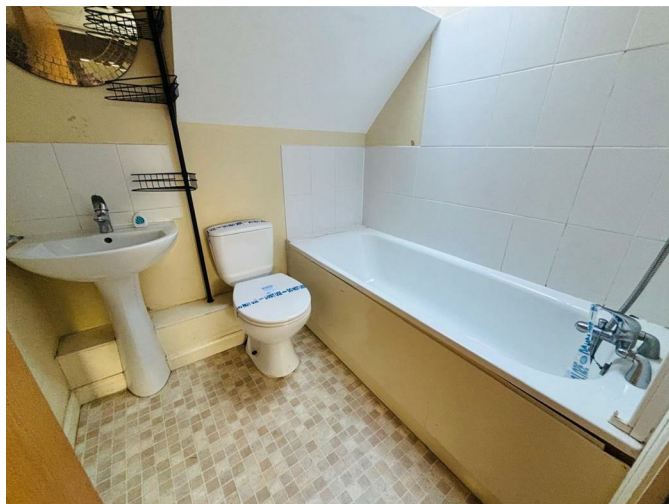
Double glazed window, central heating radiator, ample space for bedroom furniture

Bedroom Two:



Double glazed window, central heating radiator

Bathroom / WC:



Double glazed deluxe window, a white suite comprising of a panelled bath with a shower tap above, low flush WC, wash basin, ladder style central heating radiator

TO THE OUTSIDE:



Communal Area / Gardens: / Parking



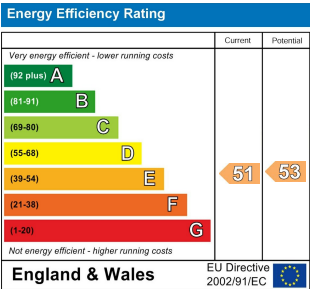
The property is surrounded by a communal area which is paved and enclosed with gating Parking space must be checked on completion of the sale

EPC Link:

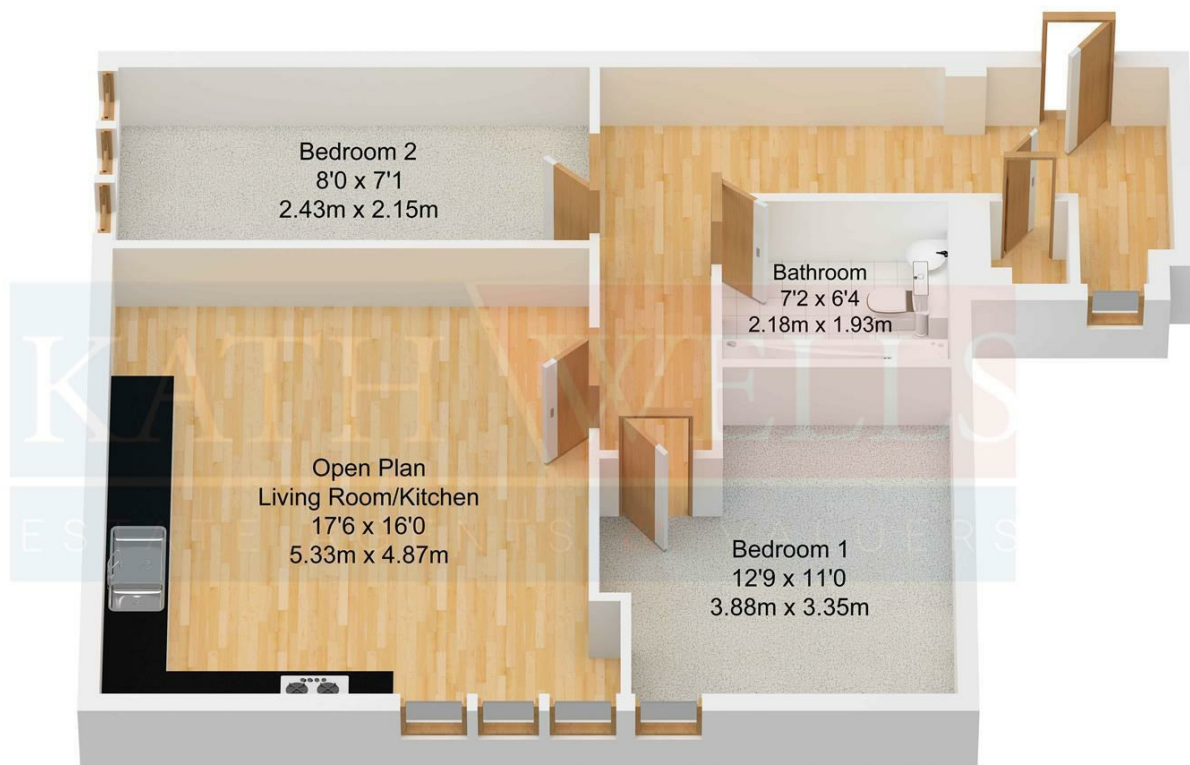
<https://find-energy-certificate.service.gov.uk/energy-certificate/9320-2794-1500-2595-6541>

Council Tax Band / EPC Rating:

Council Tax Band: A / EPC Rating: E



Floor Plan



Approx. 66.49 sqm.
(715.69 sqft.)